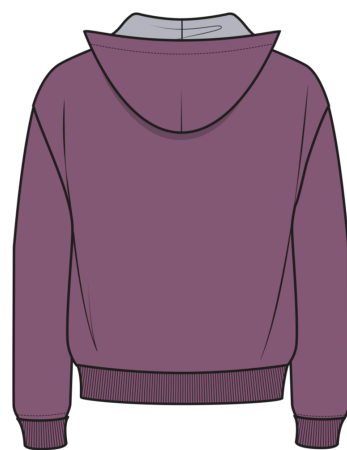
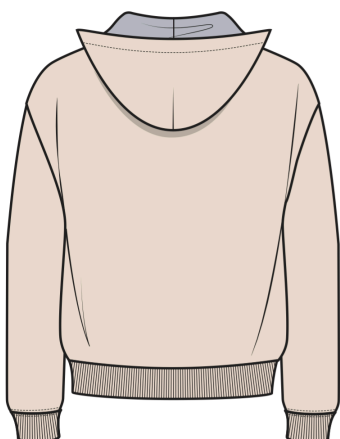
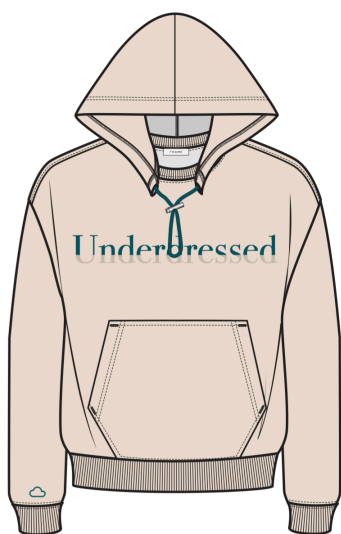
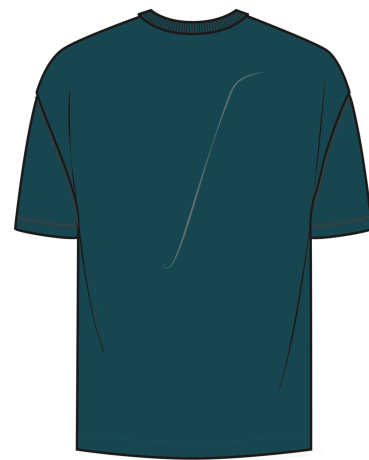
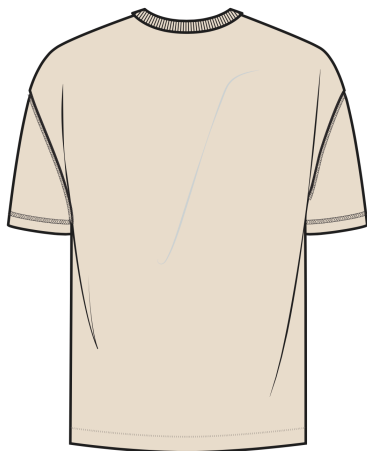


OVERDRESSED

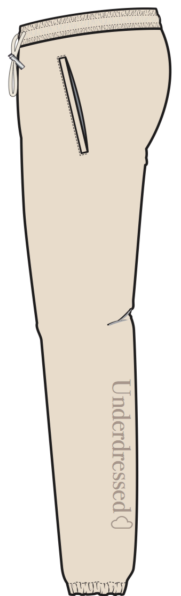
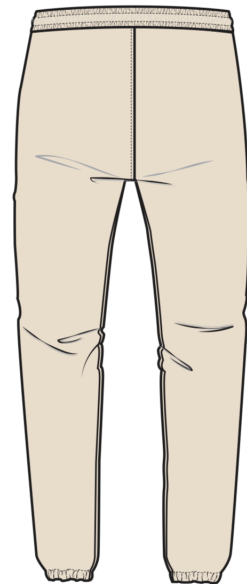
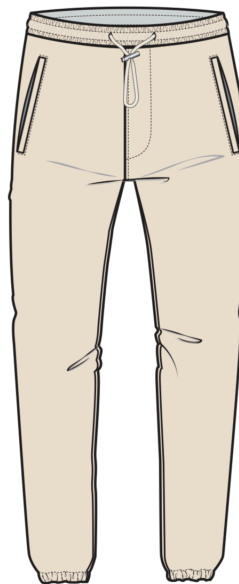
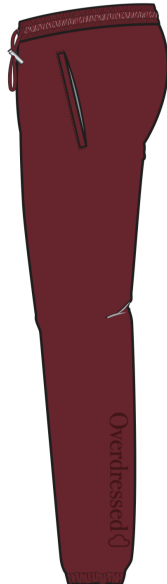
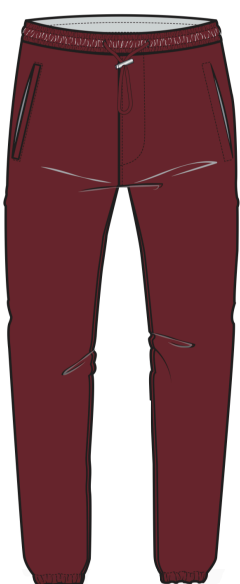
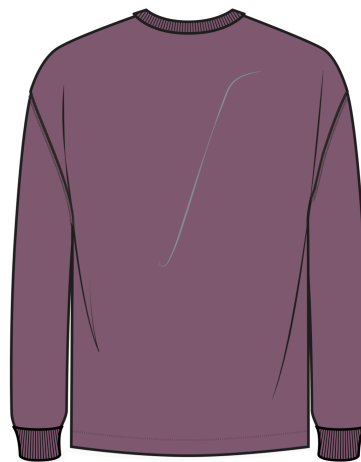
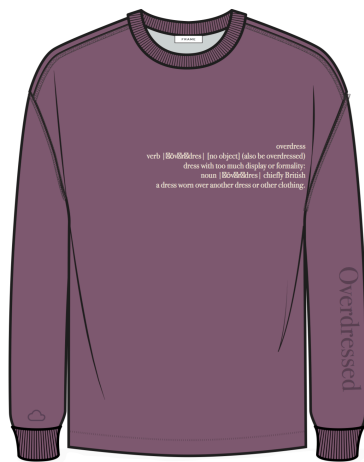
UNDERDRESSED

CAPSULE

DESIGN COLLECTION



DESIGN COLLECTION



EMBROIDERY TECHNIQUES



3D OUTLINE



RAISED FULL STITCH



HAND STITCH



SCRIBLED



EMBROIDERED APPLIQUE



LOOSE STITCH

PRINT TECHNIQUES



PVC HEAT TRANSFER



RAISED FLOCKING



FLOCKING



VINYL



RAISED 3D + PRINT



PLASTISOL



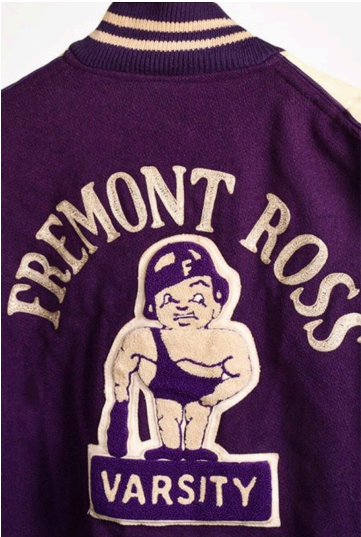
FULL STITCH



GLOW IN THE DARK

COLORS

PURPLES & LAVENDERS



COLORS

GALAXY BLUE



MINT



COLORS

BIKING RED & ORANGE/FUSHIA ACCENTS



PANTONE 16-1358
Orange Tiger
Orange Tiger imparts a fearless energy.



PANTONE 17-1926
Fruit Dove
An extroverted pink, Fruit Dove creates a presence that can't be ignored.



PANTONE 19-1650
Biking Red
An adventurous deep red, Biking Red is strong and powerful.



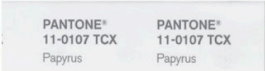
COLORS

BLUE GRASS

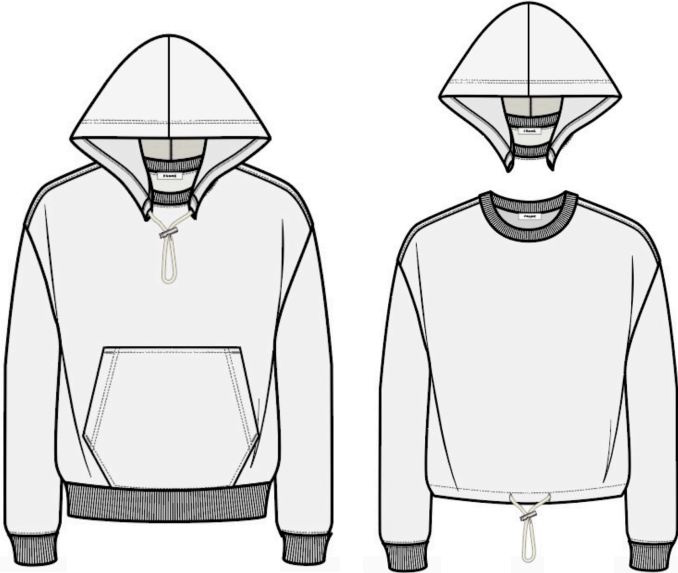


COLORS

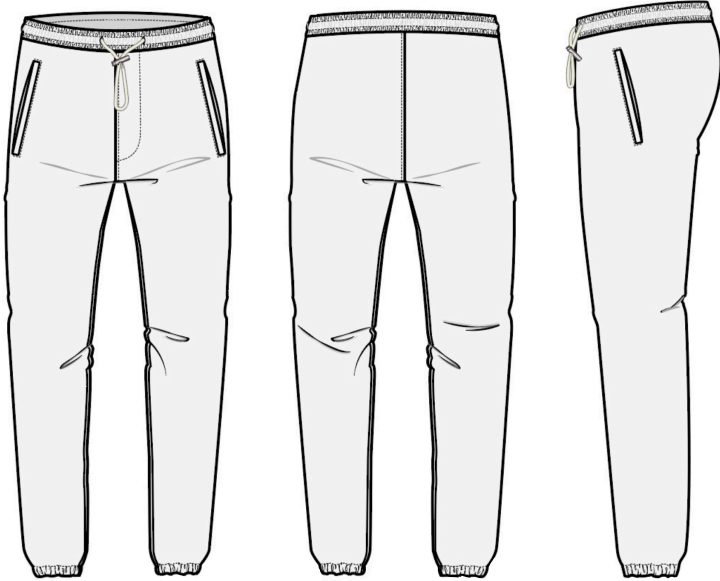
WHITE SAND



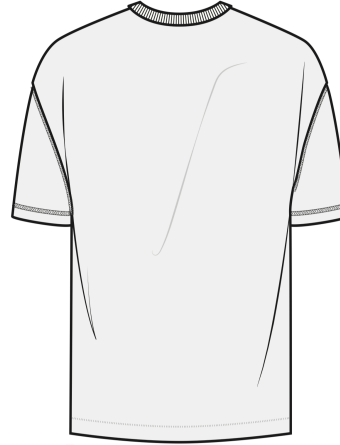
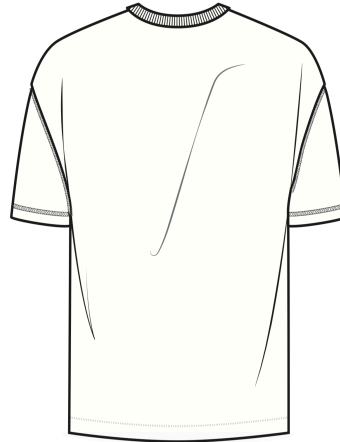
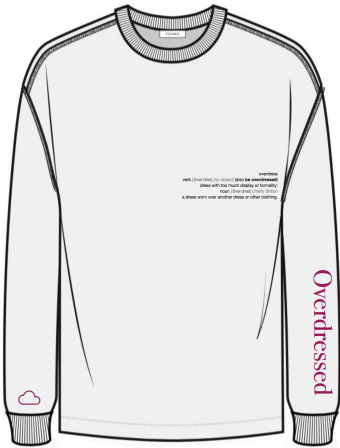
HOODY DETAILS



UNISEX SWEATPANTS



GRAPHICS & PRINT



overdress
 verb |'ōvər'dres| [no object] (also be overdressed)
 dress with too much display or formality:
 noun |'ōvər'dres| chiefly British
 a dress worn over another dress or other clothing.

REACTIVE DYE



REACTIVE & SULFURE DYE



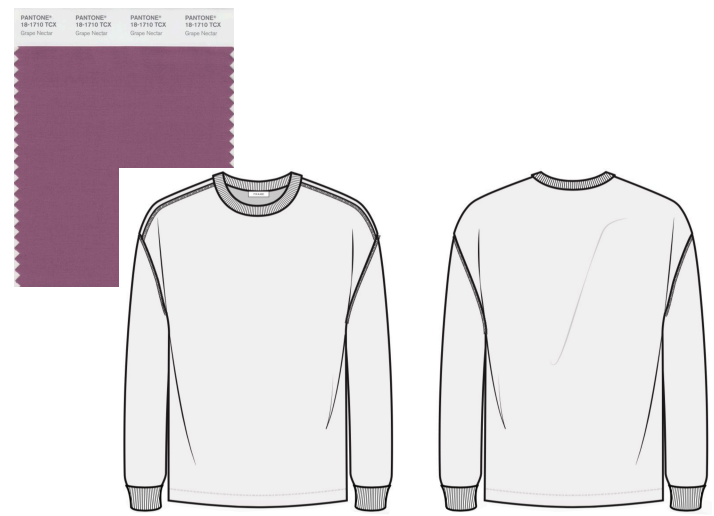
REACTIVE DYE



SULFURE DYE



SULFURE DYE

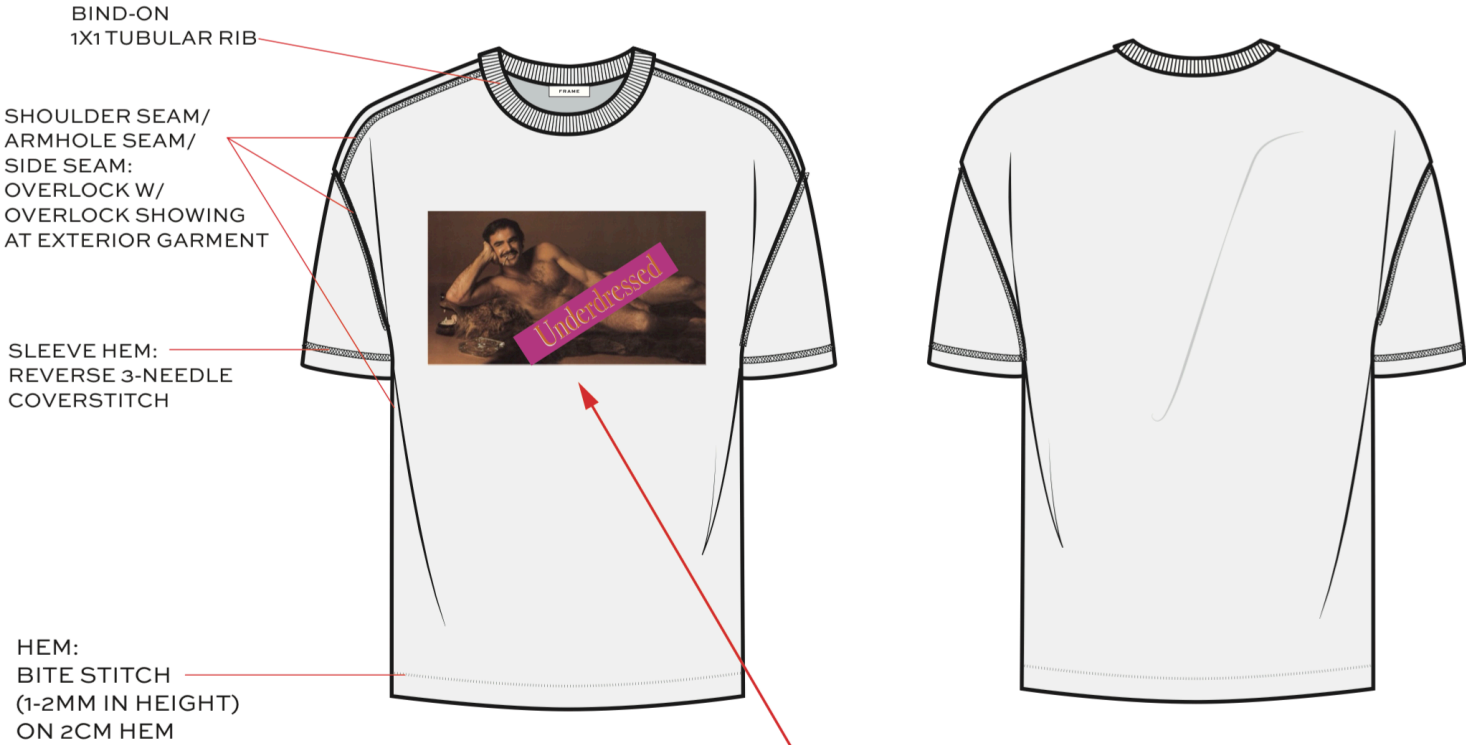


SULFURE DYE

CONSTRUCTION

FIT: RELAXED

UNDERDRESSED TEE

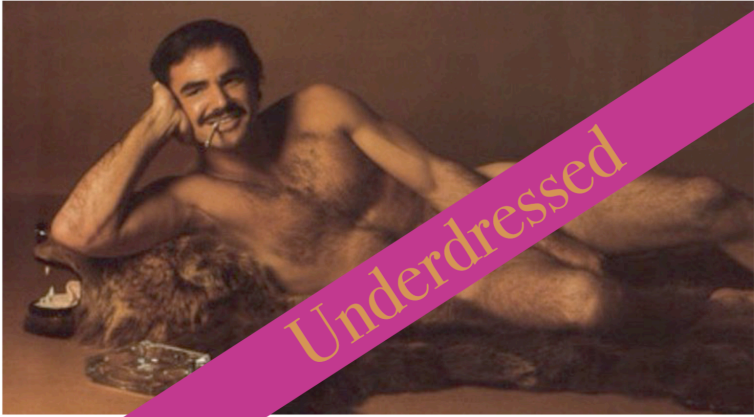


GRAPHIC : SEE SEPARATE PITCH SHEET FOR ART @100% AND PLACEMENT

PITCH SHEET

PANTONE

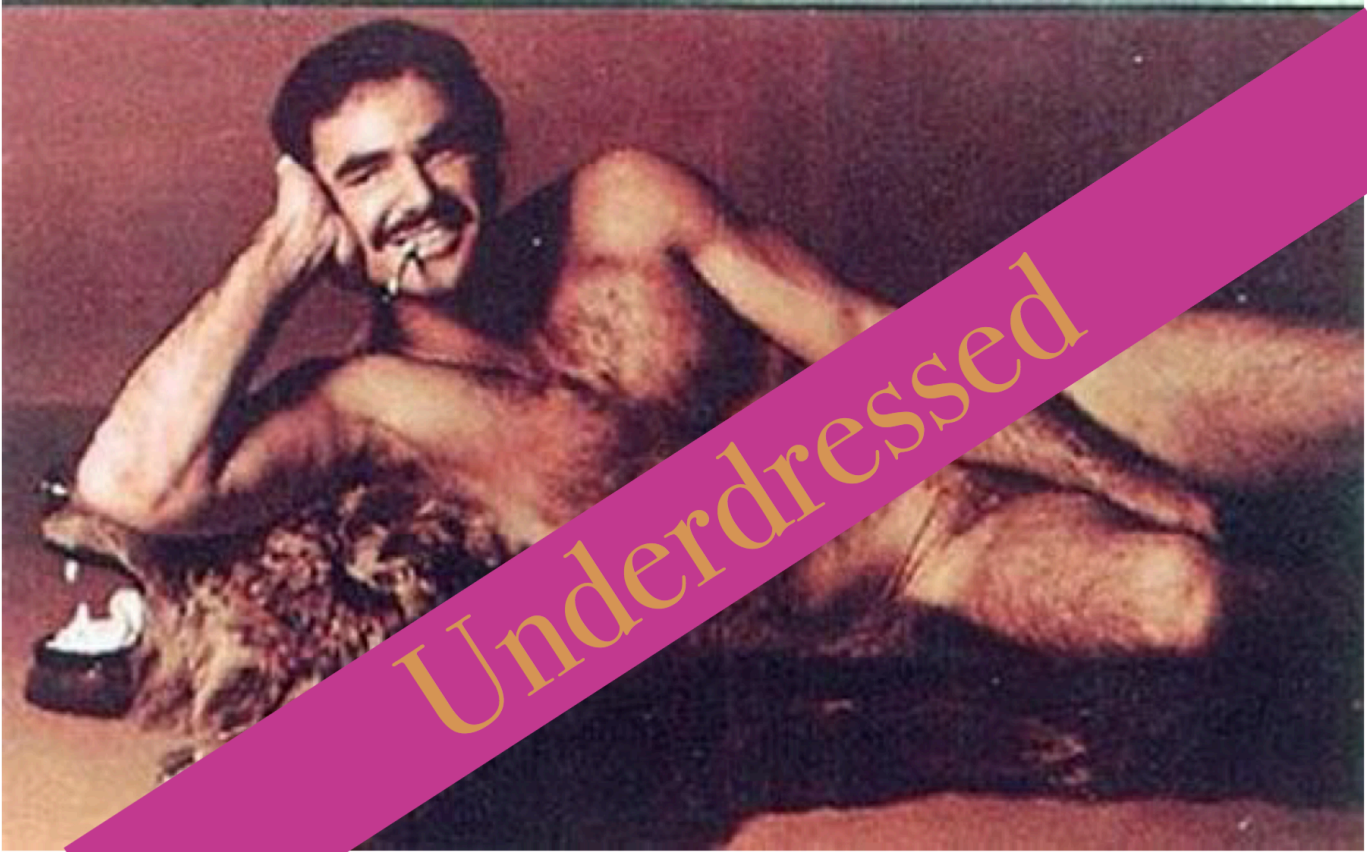
TECHNIQUE:
DIGITAL PRINT



ARTWORK @100% SCALE

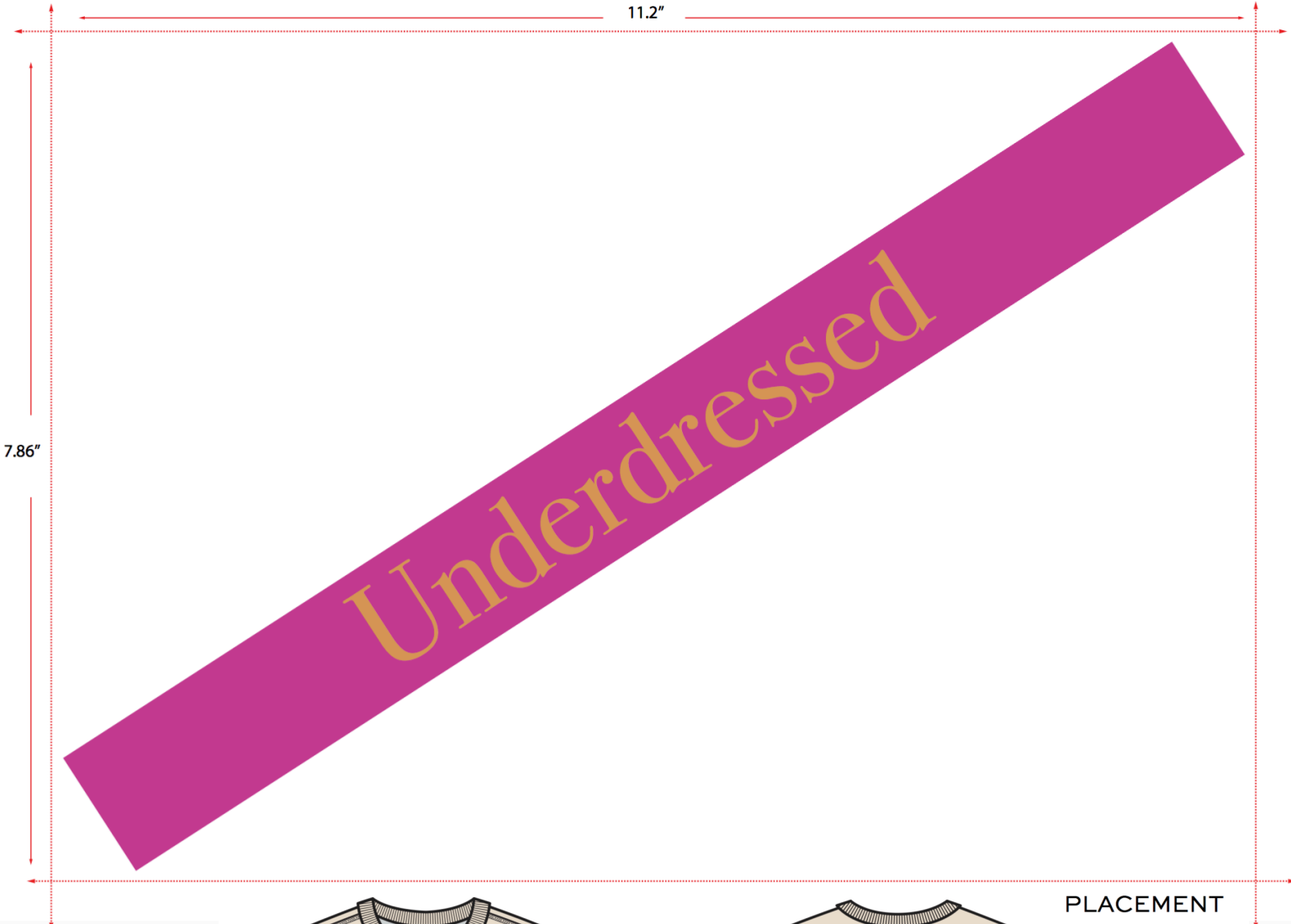
11"

6.87"



PITCH SHEET

ARTWORK @100% SCALE



PLACEMENT

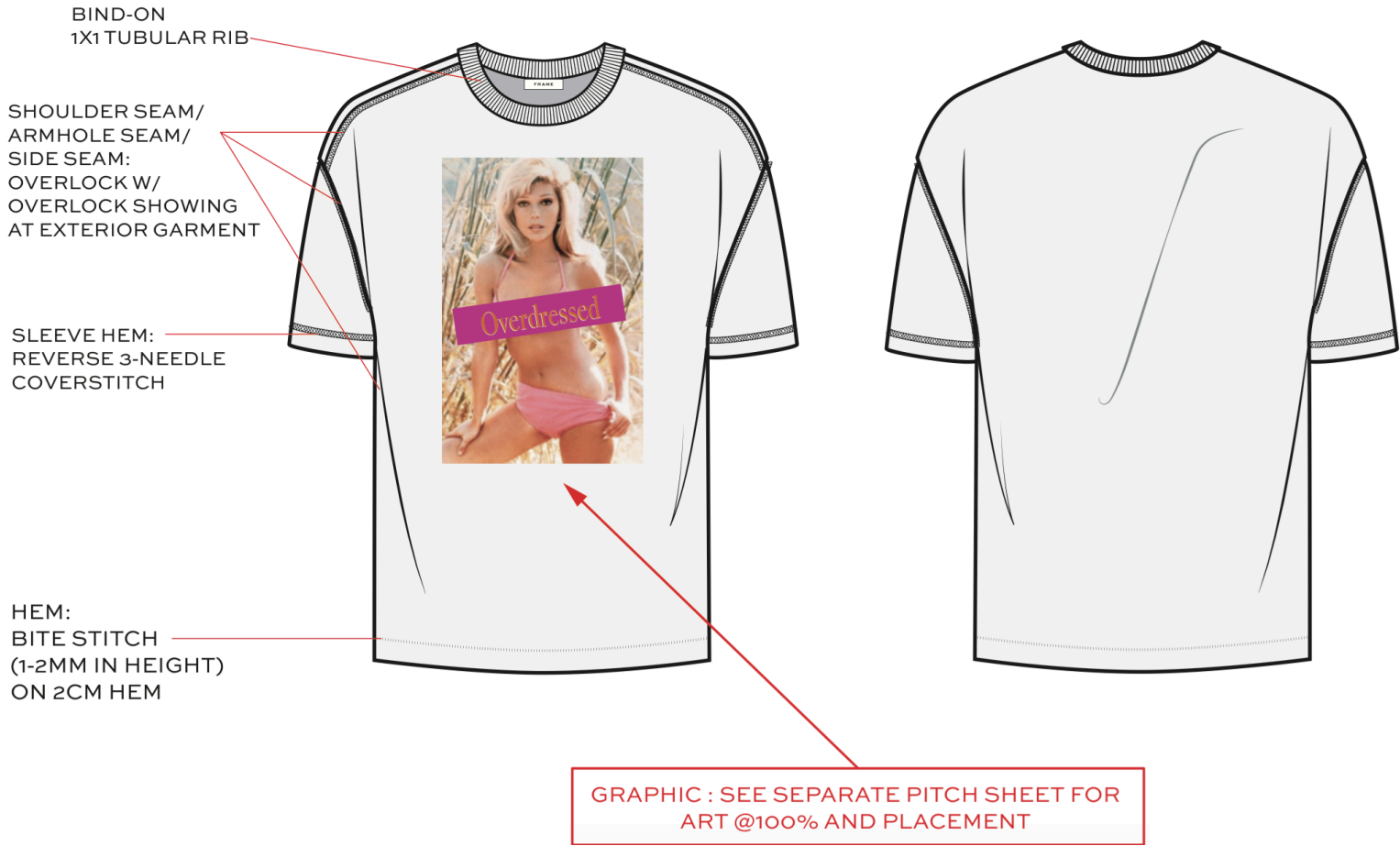


CENTER HORIZONTALLY,
PLACE 3" DOWN FROM CF
NECK SEAM

CONSTRUCTION

FIT: RELAXED

OVERDRESSED TEE



PITCH SHEET

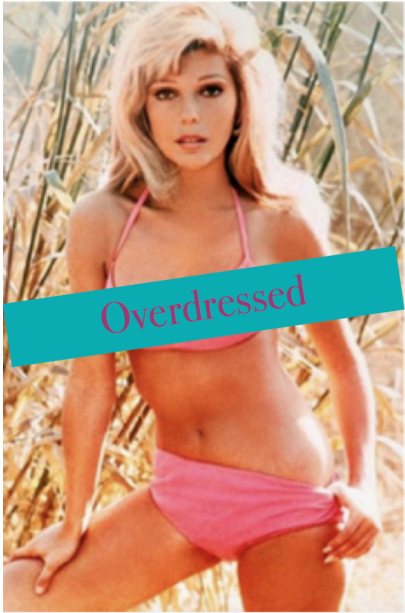
ARTWORK @ 100% SCALE

9"

13.66"



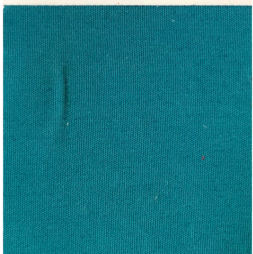
TECHNIQUE:
DIGITAL PRINT



PANTONE

PANTONE®
18-4728 TCX
Harbor Blue

PANTONE®
18-4728 TCX
Harbor Blue



PITCH SHEET

ARTWORK @ 100% SCALE



PLACEMENT

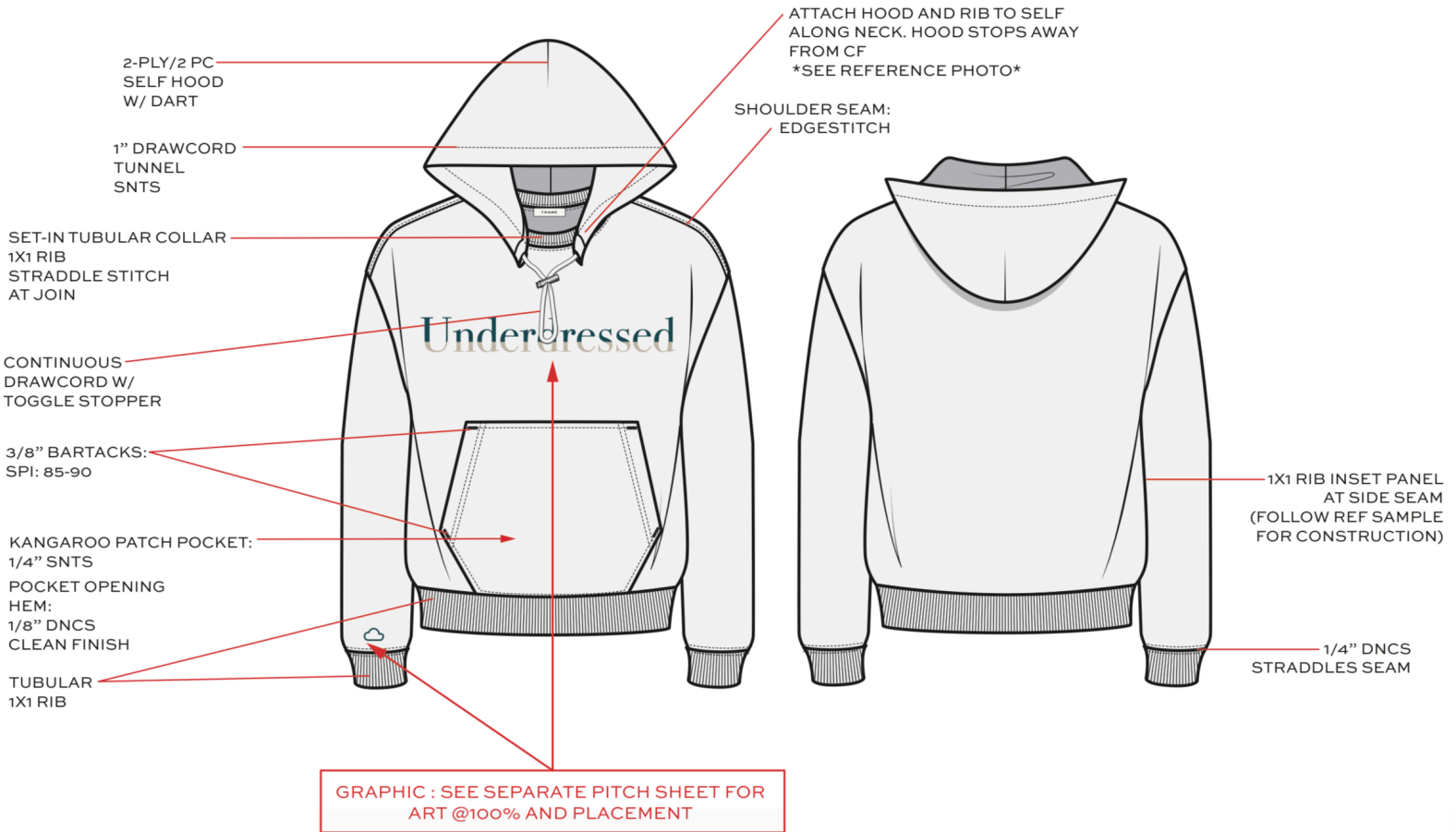


CENTER HORIZONTALLY,
PLACE 2" DOWN FROM
CF NECK SEAM

CONSTRUCTION

FIT: RELAXED

UNDERDRESSED HOODIE



PITCH SHEET

TECHNIQUE:
EMBOSS TECHNIQUE
(REFERENCE FOR TWO TONE
COLOR OF EMBROIDERY)

PANTONES



Underdressed 

ARTWORK @ 100% SCALE

11"

Underdressed

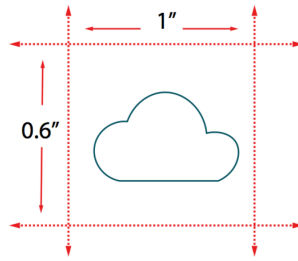
2.83"

PANTONES



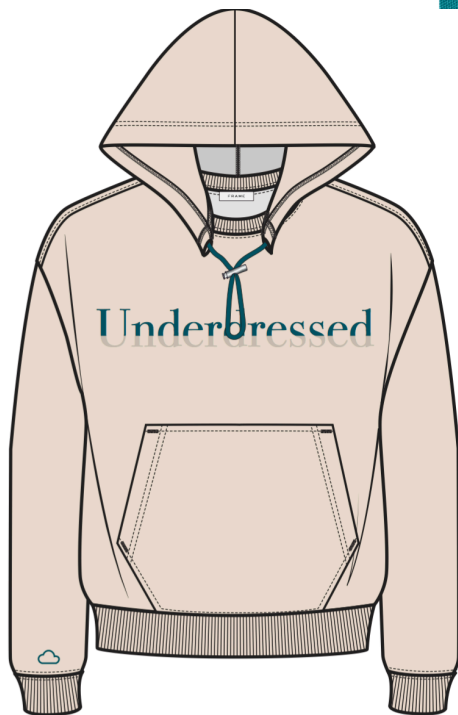
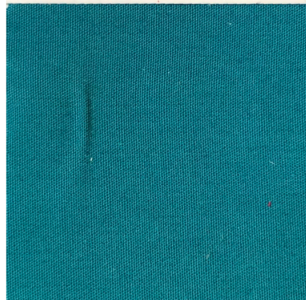
PITCH SHEET

ARTWORK @ 100% SCALE

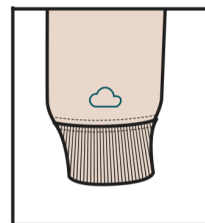


PANTONE

PANTONE® 18-4728 TCX Harbor Blue	PANTONE® 18-4728 TCX Harbor Blue
----------------------------------------	----------------------------------------

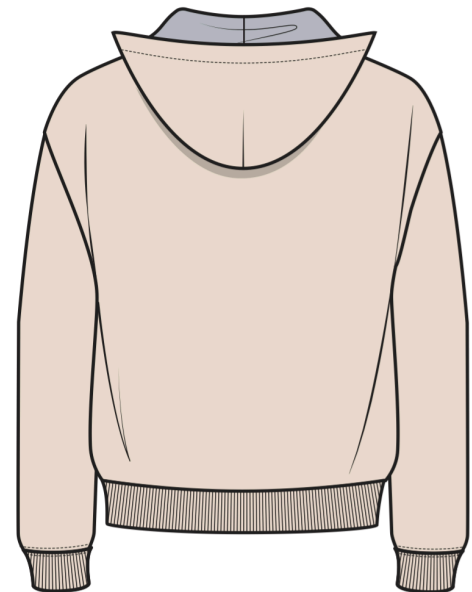


CENTER HORIZONTALLY,
PLACE 3" DOWN FROM
CF NECK SEAM



1/2" ABOVE SLEEVE
CUFF, CENTERED
WITH SHOULDER
SEAM

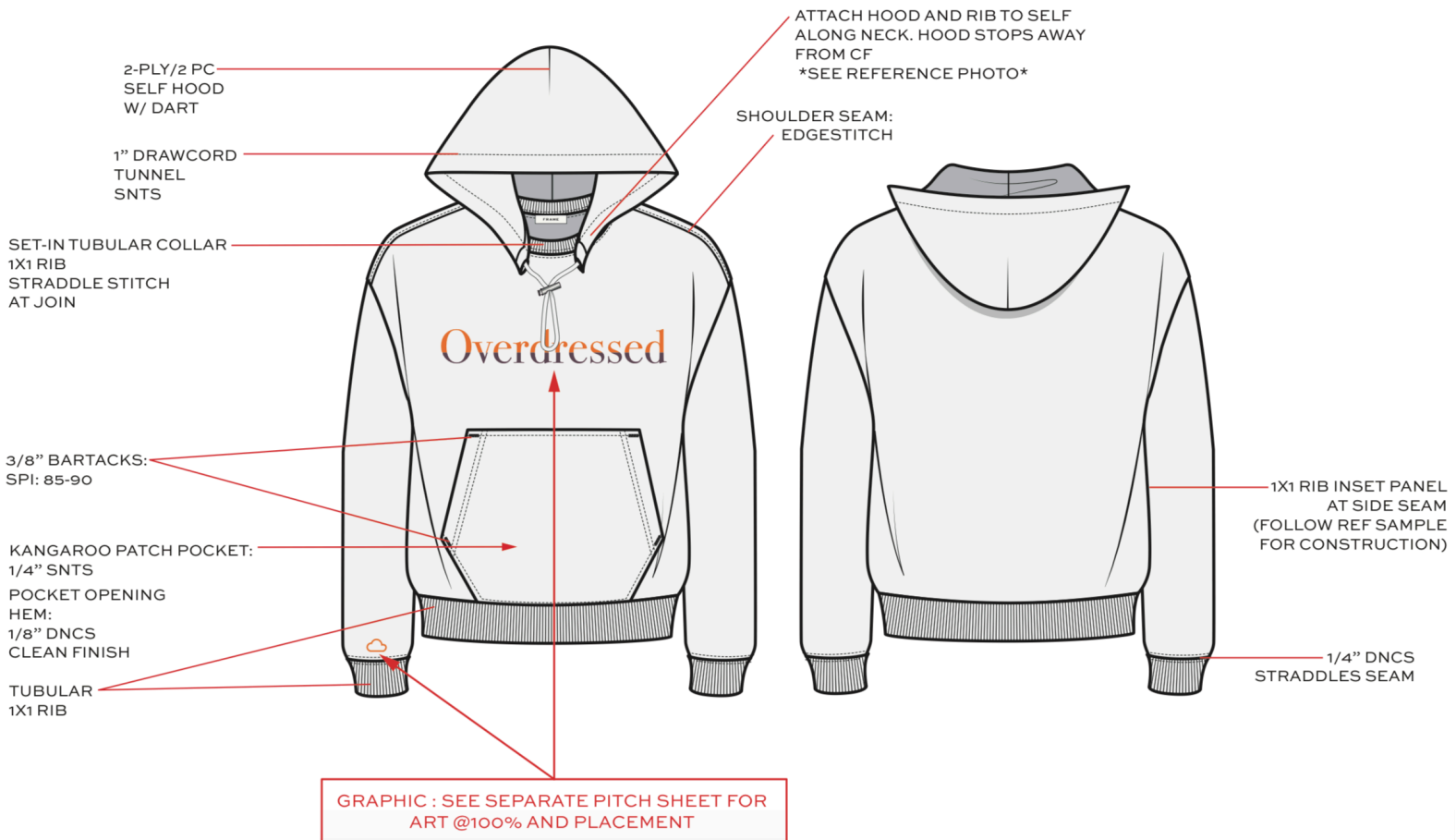
PLACEMENT



CONSTRUCTION

FIT: RELAXED

OVERDRESSED HOODIE



PITCH SHEET

TECHNIQUE:
EMBOSS TECHNIQUE
(REFERENCE FOR TWO TONE
COLOR OF EMBROIDERY)

PANTONES



Overdressed 

ARTWORK @ 100% SCALE

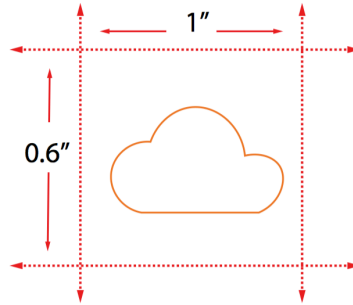


PANTONES



PITCH SHEET

ARTWORK @ 100% SCALE



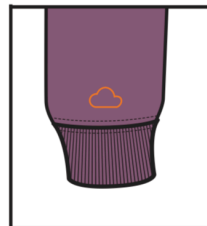
PANTONE



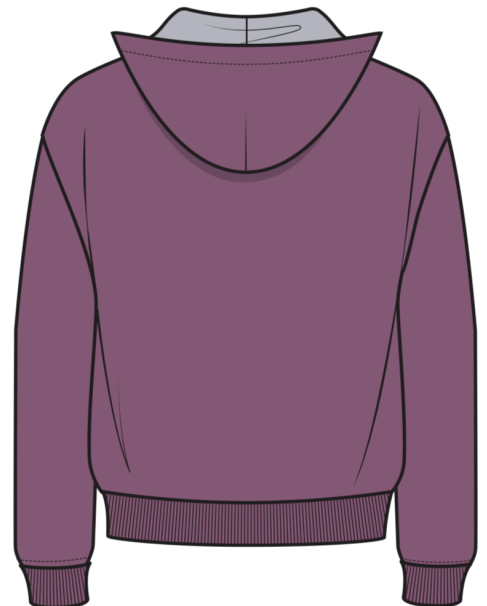
PLACEMENT



CENTER HORIZONTALLY,
PLACE 3" DOWN FROM
CF NECK SEAM



1/2" ABOVE SLEEVE
CUFF, CENTERED
WITH SHOULDER
SEAM



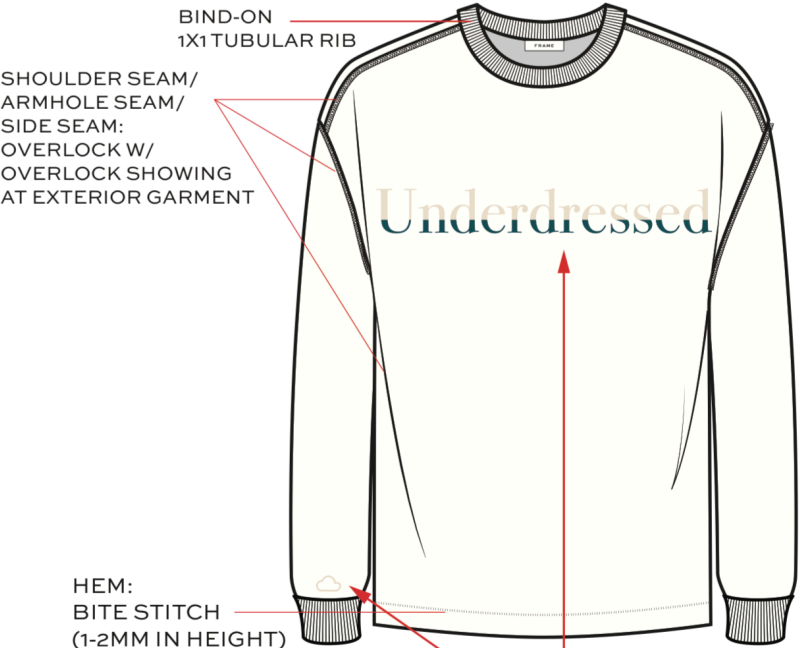
CONSTRUCTION

FIT: RELAXED

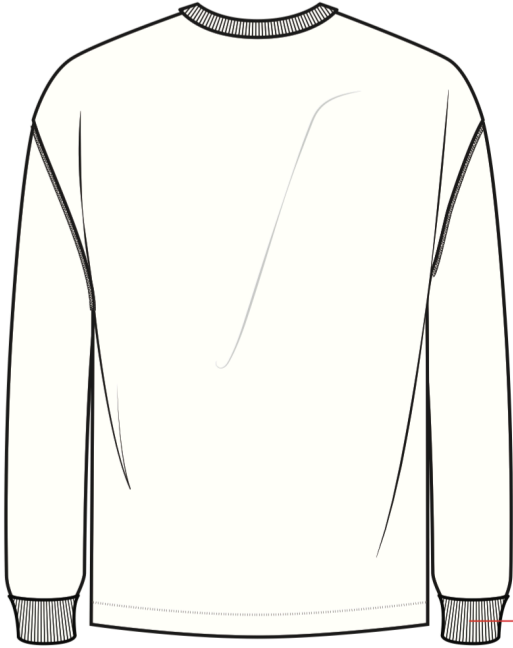
UNDERDRESSED CREW SWEATSHIRT

BIND-ON
1X1 TUBULAR RIB

SHOULDER SEAM/
ARMHOLE SEAM/
SIDE SEAM:
OVERLOCK W/
OVERLOCK SHOWING
AT EXTERIOR GARMENT



HEM:
BITE STITCH
(1-2MM IN HEIGHT)
ON 2CM HEM



TUBULAR
1X1 RIB

GRAPHIC : SEE SEPARATE PITCH SHEET FOR
ART @100% AND PLACEMENT

PITCH SHEET

TECHNIQUE:
EMBROIDERY TECHNIQUE
(REFERENCE FOR TWO TONE
COLOR OF EMBROIDERY)

PANTONES



ARTWORK @ 100% SCALE

11"

Underdressed

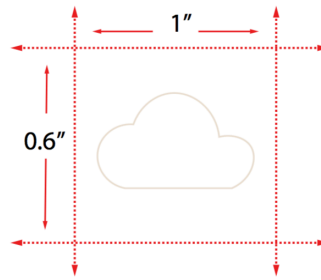
2.83"

PANTONES



PITCH SHEET

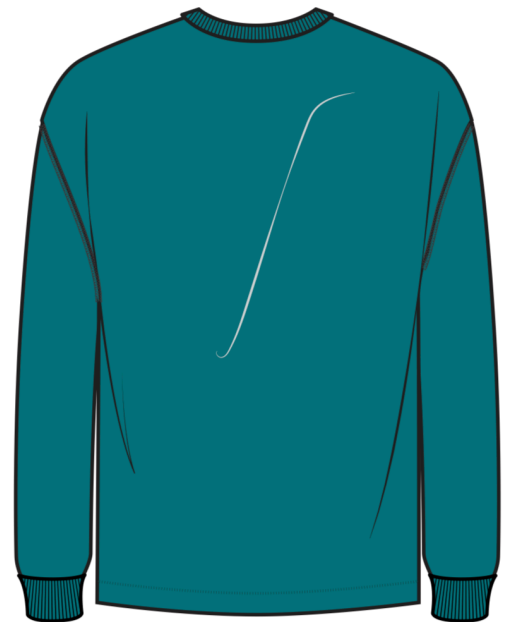
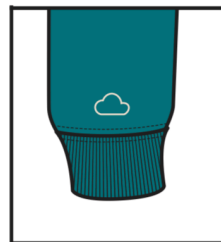
ARTWORK @ 100% SCALE



PANTONE



PLACEMENT



CENTER HORIZONTALLY, 1/2" ABOVE SLEEVE
PLACE 4" DOWN FROM CF NECK SEAM
CUFF, CENTERED WITH SHOULDER
SEAM

CONSTRUCTION

OVERDRESSED CREW SWEATSHIRT

FIT: RELAXED

BIND-ON
1X1 TUBULAR RIB

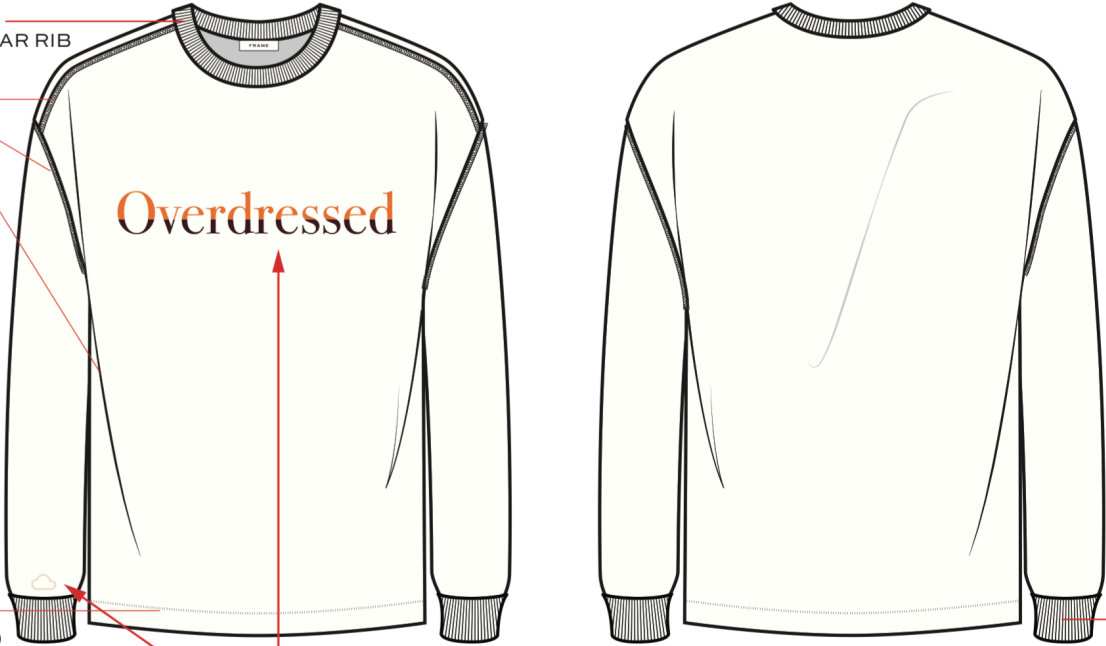
SHOULDER SEAM/
ARMHOLE SEAM/
SIDE SEAM:
OVERLOCK W/
OVERLOCK SHOWING
AT EXTERIOR GARMENT

Overdressed

HEM:
BITE STITCH
(1-2MM IN HEIGHT)
ON 2CM HEM

TUBULAR
1X1 RIB

GRAPHIC : SEE SEPARATE PITCH SHEET FOR
ART @100% AND PLACEMENT



PITCH SHEET

TECHNIQUE:
EMBROIDERY TECHNIQUE
(REFERENCE FOR TWO TONE
COLOR OF EMBROIDERY)

PANTONES



ARTWORK @ 100% SCALE

11"

Overdressed

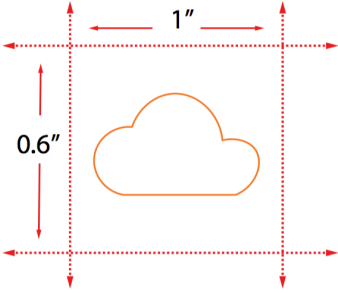
2.83"

PANTONES



PITCH SHEET

ARTWORK @ 100% SCALE



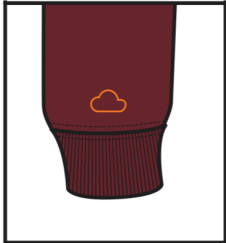
PANTONE



PLACEMENT



CENTER HORIZONTALLY,
PLACE 4" DOWN FROM
CF NECK SEAM



1/2" ABOVE SLEEVE
CUFF, CENTERED
WITH SHOULDER
SEAM



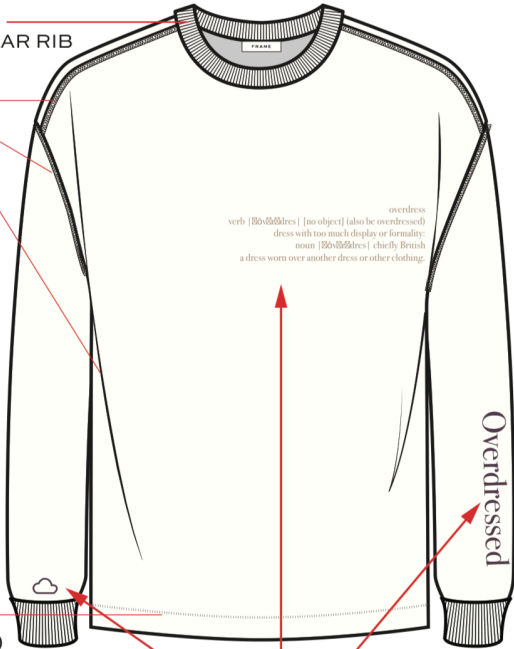
CONSTRUCTION

OVERDRESSED CREW SWEATSHIRT

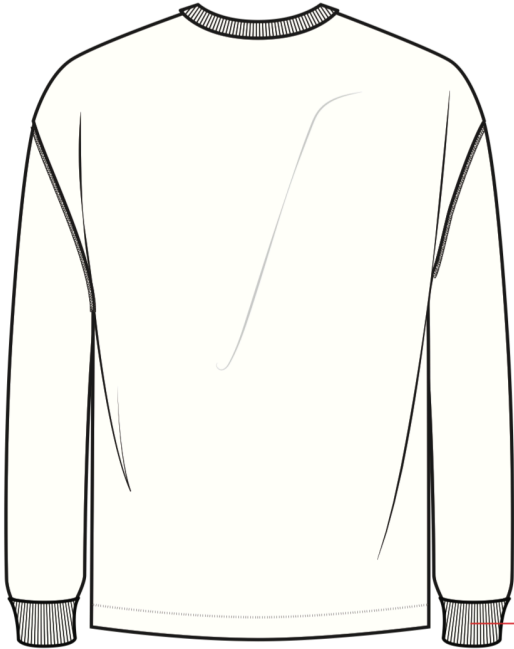
FIT: RELAXED

BIND-ON
1X1 TUBULAR RIB

SHOULDER SEAM/
ARMHOLE SEAM/
SIDE SEAM:
OVERLOCK W/
OVERLOCK SHOWING
AT EXTERIOR GARMENT



HEM:
BITE STITCH
(1-2MM IN HEIGHT)
ON 2CM HEM



TUBULAR
1X1 RIB

GRAPHIC : SEE SEPARATE PITCH SHEET FOR
ART @100% AND PLACEMENT

PITCH SHEET

TECHNIQUE:

SCREEN PRINT &
TONAL GLOSS PRINT

PANTONES



overdress
verb | ˌoʊvərˈɒdres | [no object] (also be overdressed)
dress with too much display or formality:
noun | ˌoʊvərˈɒdres | chiefly British
a dress worn over another dress or other clothing.



PANTONE®
11-0907 TPX



Overdressed



ARTWORK @ 100% SCALE

11"

Overdressed

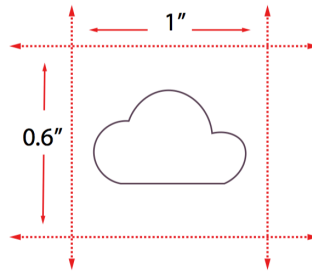
2.83"

PANTONE



PITCH SHEET

ARTWORK @ 100% SCALE



PANTONE



ARTWORK @ 100% SCALE

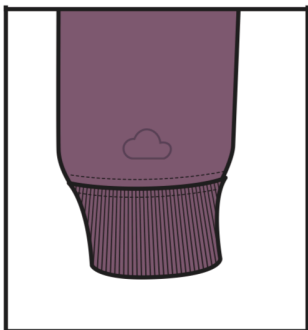
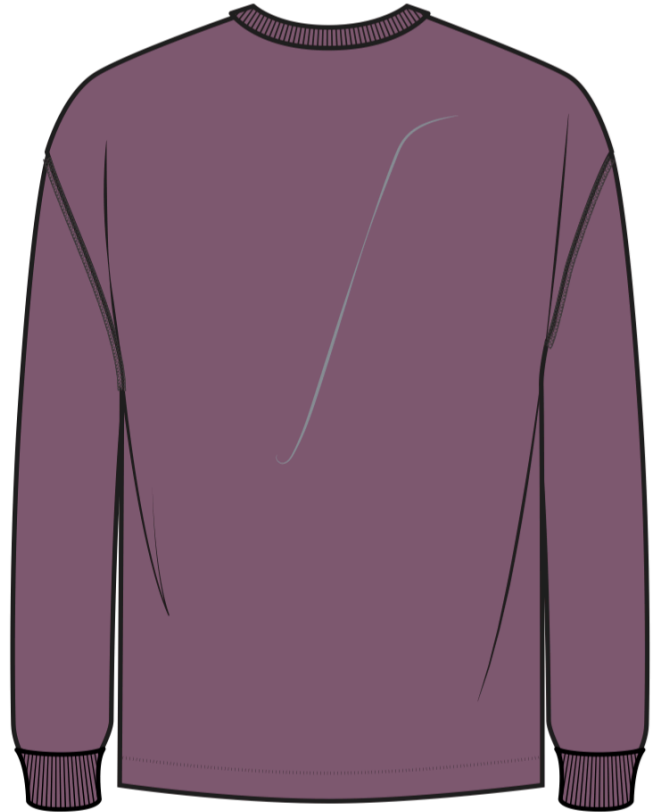
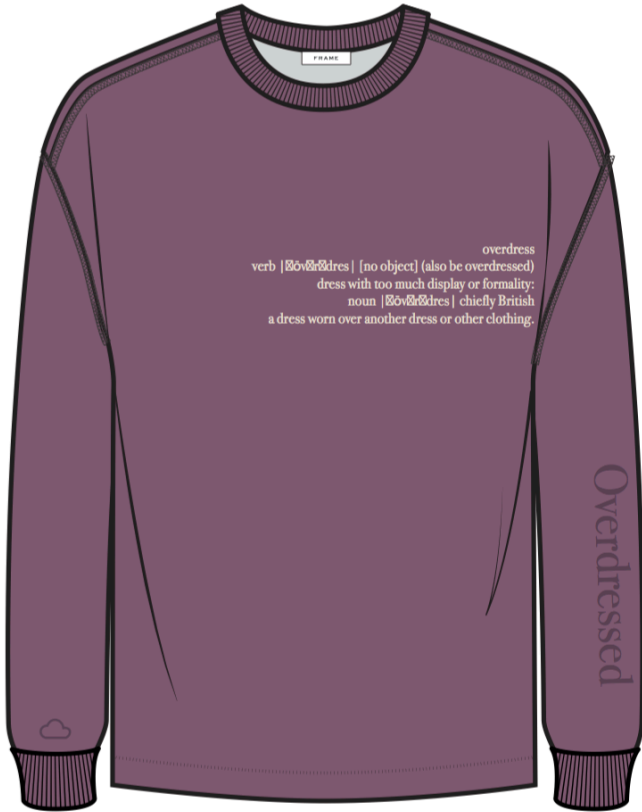


PANTONE



PITCH SHEET

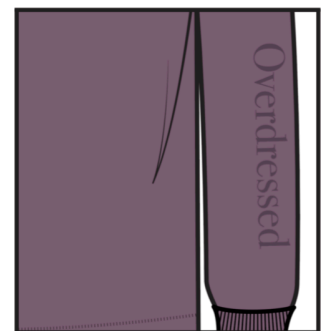
PLACEMENT



1/2" ABOVE SLEEVE
CUFF, CENTERED
WITH SHOULDER
SEAM



7" DOWN FROM
SHOULDER'S SEAM,
1/2" LEFT FROM
WEARER'S LEFT SIDE
SEAM



1" ABOVE SLEEVE
CUFF, 1/2" LEFT
FROM SHOULDER
SEAM LINE

CONSTRUCTION

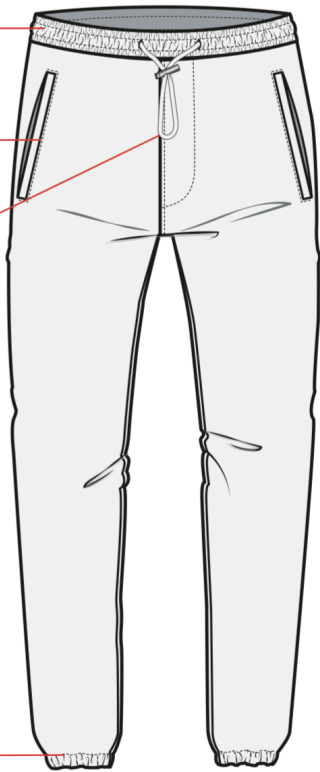
UNDERDRESSED SWEATPANTS

FIT: SLIM

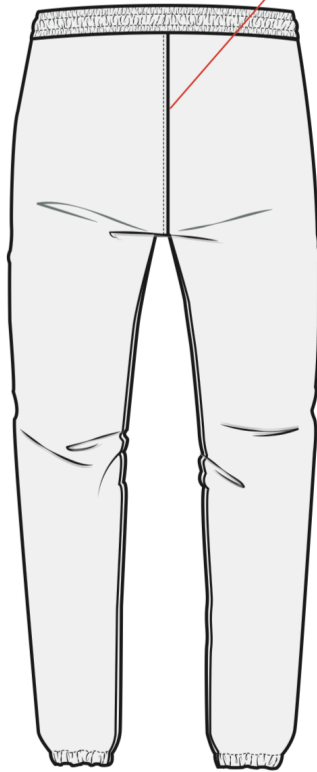
TUBULAR SELF WB:
DNDS DRAWCORD TUNNEL
W/ SOFT ELASTIC
SET WITH EASE

WELT POCKET W/
EDGESTITCH

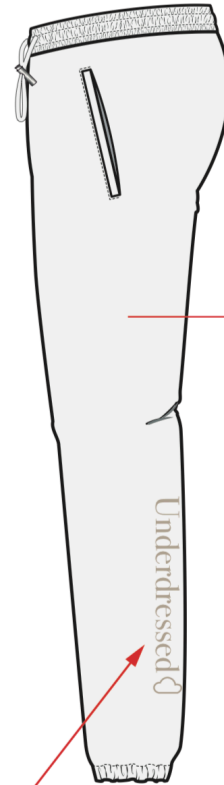
CONTINUOUS
DRAWCORD W/
TOGGLE STOPPER



FRONT/BACK RISE:
1/4" MOCK FELL



NO OUTSEAM SIDE SEAM



CUFF:
3/4" SNCS
ELASTIC TUNNEL
W/ SOFT ELASTIC TRAPPED IN SEAM
TO PREVENT TWISTING,
SET WITH EASE

GRAPHIC : SEE SEPARATE PITCH SHEET FOR
ART @100% AND PLACEMENT

PITCH SHEET

TECHNIQUE:
TONAL FLOCKING

PANTONE

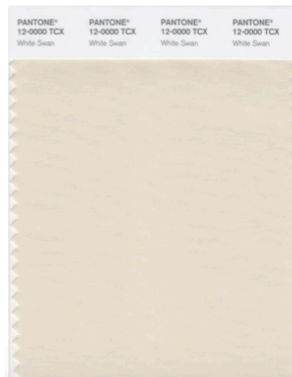


Underdressed

ARTWORK @ 100% SCALE

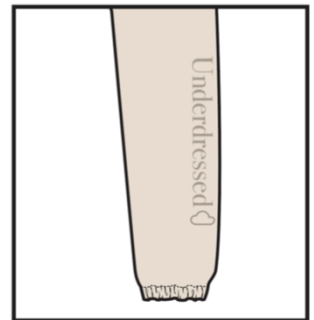
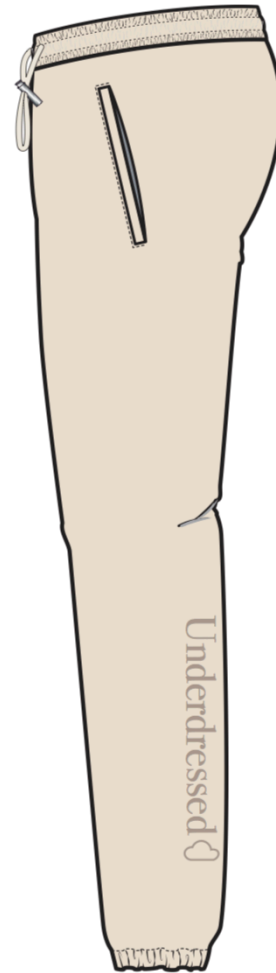
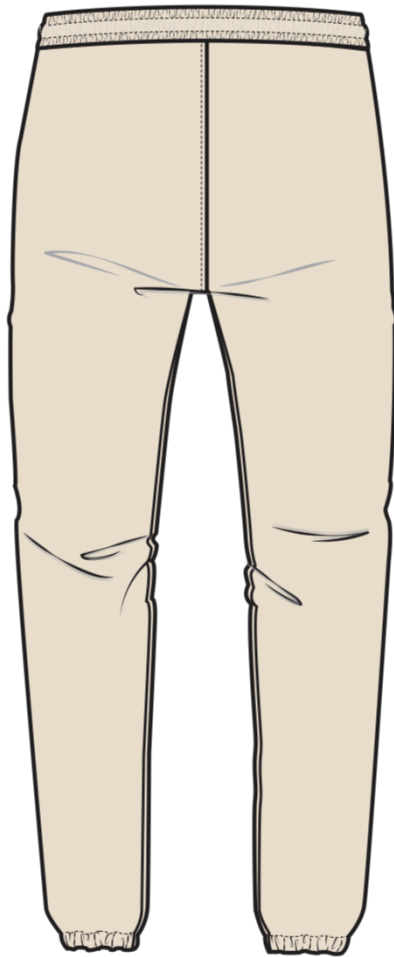
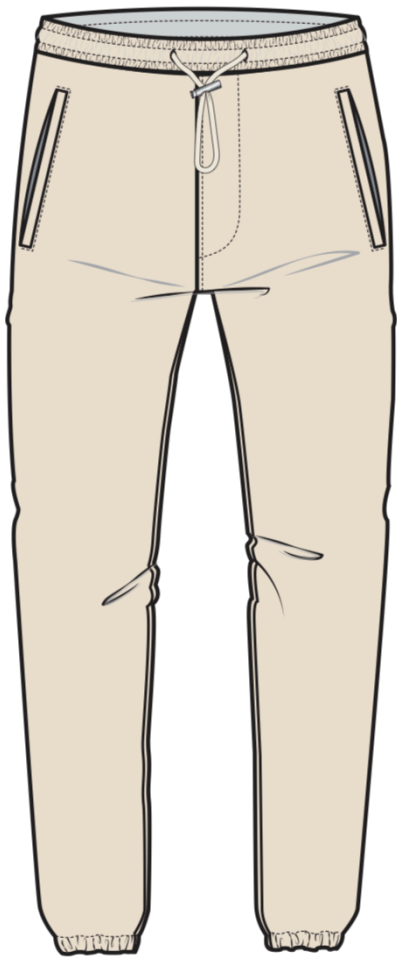


PANTONE



PITCH SHEET

PLACEMENT



1" ABOVE CUFF ON
WEARER'S LEFT,
5" OVER FROM
CENTER

CONSTRUCTION

OVERDRESSED SWEATPANTS

FIT: SLIM

TUBULAR SELF WB:
DNTS DRAWCORD TUNNEL
W/ SOFT ELASTIC
SET WITH EASE

WELT POCKET W/
EDGESTITCH

CONTINUOUS
DRAWCORD W/
TOGGLE STOPPER

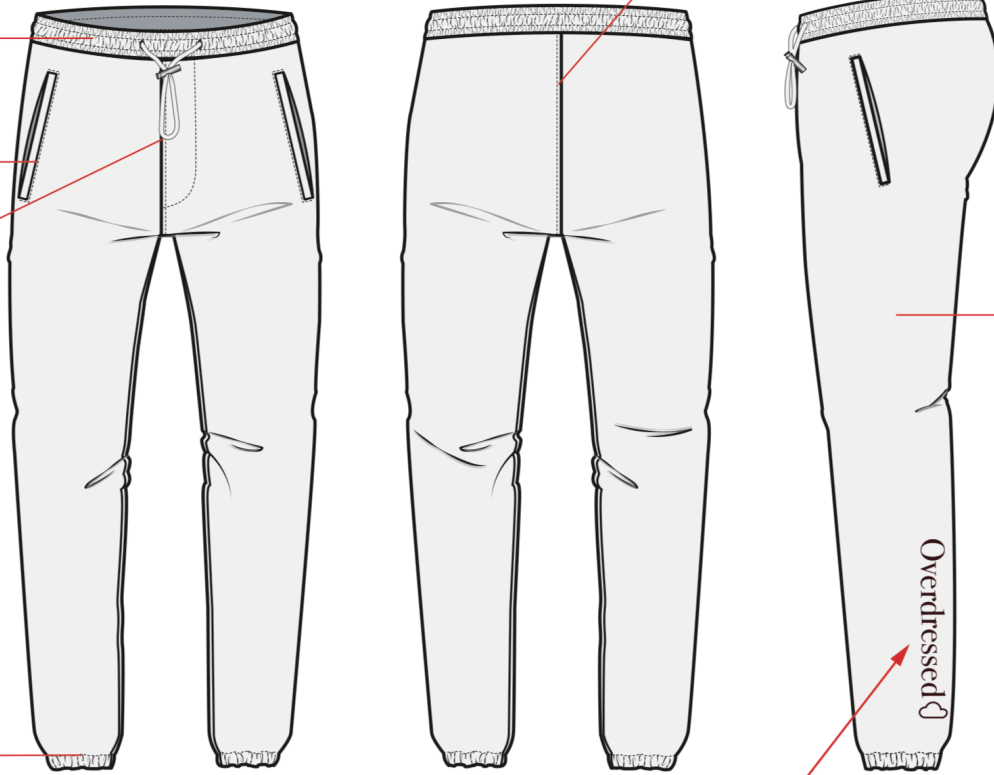
CUFF:
3/4" SNCS
ELASTIC TUNNEL
W/ SOFT ELASTIC TRAPPED IN SEAM
TO PREVENT TWISTING,
SET WITH EASE

FRONT/BACK RISE:
1/4" MOCK FELL

NO OUTSEAM SIDE SEAM

Overdressed

GRAPHIC : SEE SEPARATE PITCH SHEET FOR
ART @100% AND PLACEMENT



PITCH SHEET

TECHNIQUE:
TONAL FLOCKING

PANTONE



Overdressed

ARTWORK @ 100% SCALE

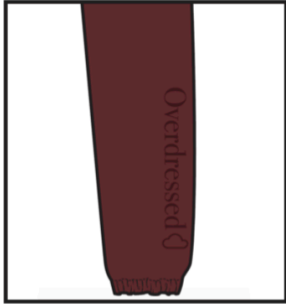
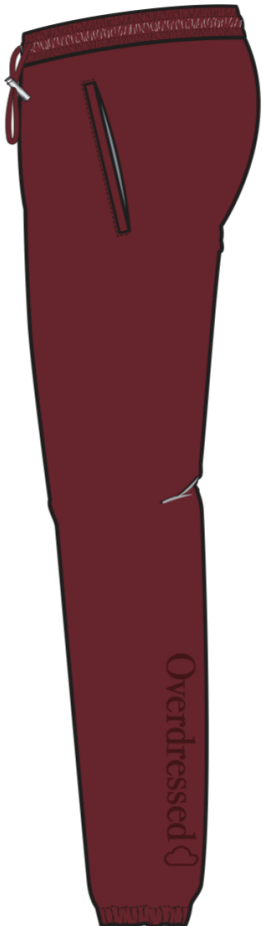
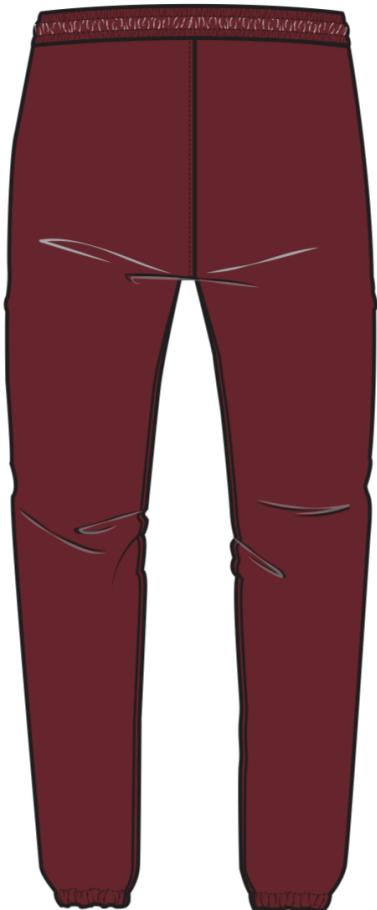
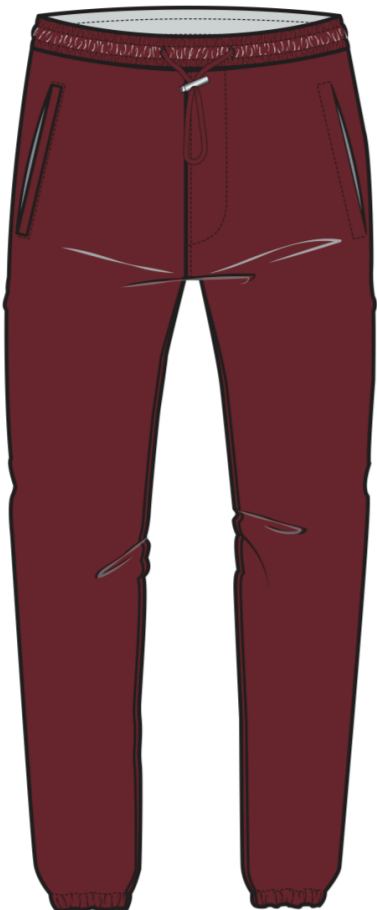


PANTONE



PITCH SHEET

PLACEMENT



1" ABOVE CUFF ON
WEARER'S LEFT,
5" OVER FROM
CENTER